

PLEASE READ ALL STEPS BEFORE BEGINNING

START HERE

Watch our instructional video at
www.immunolabs.com/fingerprick/

LAYOUT ALL CONTENTS OF PACKAGE AS SHOWN

- a. (1) Symptom checklist
- b. (1) Blood collection device that has four prongs with white tips
- c. (2) Rubber bands
- d. (2) Sterile alcohol prep pads with benzocaine
- e. (2) Lancets
- f. (2) Bandages
- g. (2) Sterile gauze pads
- h. (1) Specimen bag
- i. (1) Prepaid return shipping label
- j. (1) Return shipping package



a.



b.



c.



d.



e.



f.



g.



h.



i.



j.

OUR STORY

Immuno Labs is widely recognized as one of the leading food and environmental allergy testing facilities in the world. Together with our BetterHealthUSA and Food Signals affiliate, we offer some of the most clinically useful and effective laboratory tests in the fields of allergy, immunology and nutrition. Since 1978, we have conducted more than 51 million tests with 97% of our physicians testing for ten years or more – a clear indication of physician and patient satisfaction.

State and federally-licensed, Immuno Labs adheres to the highest state and CLIA standards for Quality Control and Proficiency Testing. Our tests enable healthcare practitioners to identify the underlying cause of many chronic health ailments that typically evade conventional analysis resulting from what is commonly known as "Toxic Food Syndrome."

To date, Immuno Laboratories has helped over 450,000 people Eat Well, Feel Well and Live Well by using the right food as their first and best medicine.

OUR MONEY BACK GUARANTEE

Since our tests have shown us that 95% of the population has food toxicities, we are willing to guarantee our test results in an effort to help you be healthier. If it turns out that you have no food toxicities, you are most fortunate. You are not only one of the lucky 5%, but we will refund your Bloodprint® test fees.



www.immunolabs.com

BetterHealthUSA and Food Signals is an affiliate of Immuno Laboratories, Inc.
Visit our patient support site at
www.BetterHealthUSA.com

© 2020 Immuno Laboratories, Inc. Fort Lauderdale, FL (800) 231-9197
Immuno Bloodprint® trademark registered by Immuno Laboratories, Inc.
PCS.Bro.Finger Prick Instructions v20200312



FINGERPRICK BLOOD COLLECTION INSTRUCTIONS



STEPS

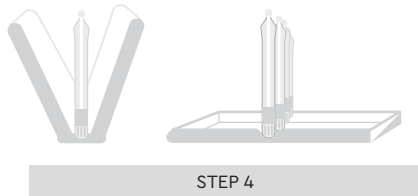
1. Complete the symptom checklist and save to send back with specimen.

2. Open a bandage and sterile gauze pad to have ready for use after blood collection.



3. Complete the label on the back of the blood collection device by providing the Patient's Name, Date of Birth, and Physician's Name.

4. Open the blood collection device by pulling at the sides and set on a flat surface as in diagram below.



5. Wash hands thoroughly under hot water (as hot as you can without causing injury).

6. After washing hand, soak ring finger in hot water for 2 minutes. Remove hand from water and dry.

7. Take an alcohol prep pad and rub the tip of your ring finger's padded fingerprint area.



STEP 5



STEP 6



STEP 7

8. Stand up and shake hands in a downward motion, below the heart, to allow the alcohol to dry off the fingertip.



STEP 9

9. Wrap rubber band until it's doubled on the wrist of the soaked hand.

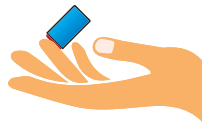


STEP 10

10. Squeeze and rub arm in a downward motion so as to pump as much blood into the hand before pricking with a lancet.

11. Remove the clear cap from the blue lancet, keeping the cap nearby for later use.

12. Place your hand of the finger you are going to prick, palm up with the back of your hand against a hard surface like a tabletop.



STEP 12-13

13. With the blue lancet, prick the padded middle of the fingertip of your sanitized ring finger.

14. Apply the white tip of the blood collection device to draw the blood of the pricked fingertip. Watch sampler tip turn FULLY red and then wait for 2 seconds. SLOWLY and STEADILY remove sampler tip from finger.



STEP 14

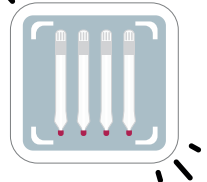
15. Repeat step 14 until all four white tips have been completed.

16. Use gauze to stop the bleeding of your fingertip while also **removing the rubber band from the wrist.**



17. Apply bandage to fingertip, and allow blood collection device to dry for 1-3 hours before shipping.

18. Fold and close the blood collection device to cover the white tips and **press firmly on both sides until it clicks.**



STEP 18

19. Set clear cap back onto the lancet and dispose of safely.

SPECIMEN SHIPPING

1. Place the blood collection device into the SPECIMEN BAG provided and seal.

2. Place the SPECIMEN BAG inside the pre-labeled return shipping package provided along with your completed symptom checklist and seal closed.

3. Place the return shipping package in the appropriate mailing service receiving box as indicated on the shipping label.



STEP 1



STEP 2



STEP 3